

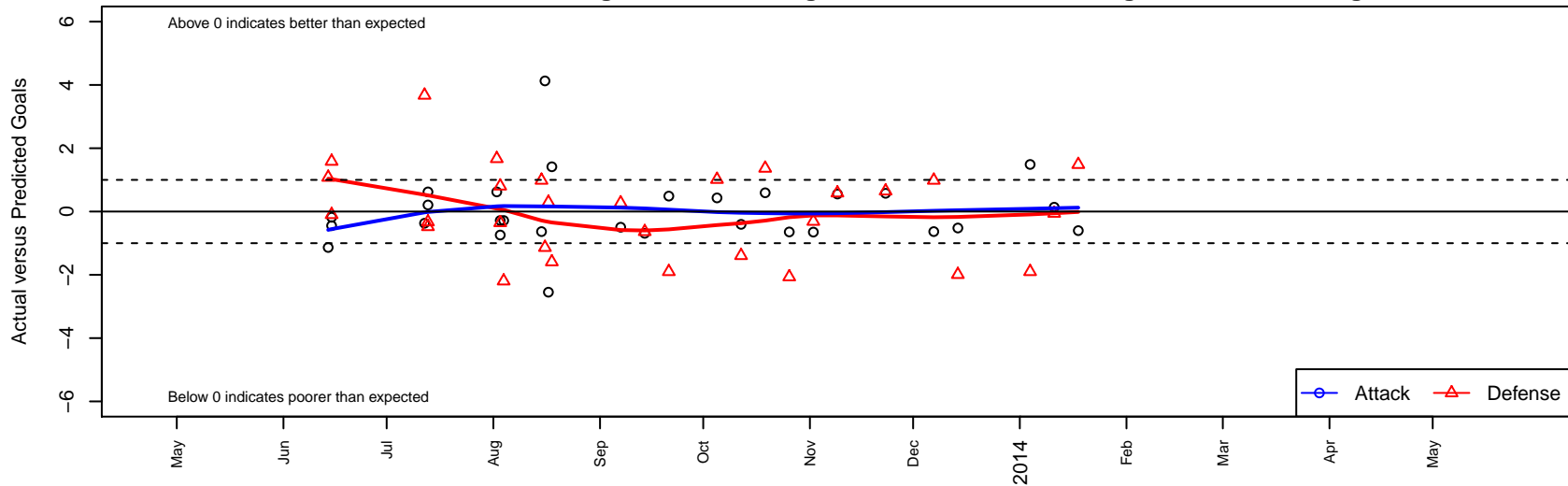
Seattle United NE Blue G00

Seattle United Regional
 Seattle, WA
 G00 total strength=669
 attack=0.6 defense=0.68
 fall league = NPSL G13D1
 alt names used:
 Seattle United NE G00 Blue
 Seattle United NE Blue [G00]
 SEATTLE UNITED NE G00 BLUE (WA)
 2013 Seattle United NE G00 Blue

Venues played:
 Shoreline Classic GU12-13 Gold
 Seattle Cup GU13
 Dungeness Cup GU13
 Bigfoot Silver U13
 NPSL G13D1
 Founders Cup G00



Seattle United NE Blue G00
 Dots are actual minus expected GF (blue circles) and GA (red triangles).
 Blue line is smoothed change in attack strength. Red is smoothed change in defense strength.



	date	home		away		venue	pred.home	pred.away
11111	2014-01-18	Seattle United NE Blue G00	0	Pacific FC Orange G00	0	Founders Cup G00	0.60	1.48
11077	2014-01-11	Sefnco Explosion FC G00	1	Seattle United NE Blue G00	1	Founders Cup G00	0.94	0.86
11053	2014-01-04	Lake Hills Pumas G00	4	Seattle United NE Blue G00	2	Founders Cup G00	2.10	0.51
11046	2013-12-14	Crossfire Select Metzger G00	4	Seattle United NE Blue G00	0	NPSL G13D1	2.01	0.52
11034	2013-12-07	SCORE Rockets G00	0	Seattle United NE Blue G00	0	NPSL G13D1	0.99	0.63
10881	2013-11-23	Seattle United NE Blue G00	1	Seattle United S Blue G00	1	NPSL G13D1	0.42	1.65
10672	2013-11-09	Seattle United Shoreline Blue G00	1	Seattle United NE Blue G00	1	NPSL G13D1	1.59	0.45
10530	2013-11-02	Seattle United NE Blue G00	0	BIFC Blue G00	3	NPSL G13D1	0.65	2.69
10371	2013-10-26	MIFC Maroon G00	4	Seattle United NE Blue G00	0	NPSL G13D1	1.93	0.65
10219	2013-10-19	Kent United Green G00	1	Seattle United NE Blue G00	1	NPSL G13D1	2.37	0.41
10032	2013-10-12	Seattle United NE Blue G00	0	FME Rage G00	5	NPSL G13D1	0.40	3.61
9843	2013-10-05	Seattle United NE Blue G00	1	FC Edmonds Crew G00	1	NPSL G13D1	0.57	2.01
9518	2013-09-21	Lake Hills Pumas G00	4	Seattle United NE Blue G00	1	NPSL G13D1	2.10	0.51
9361	2013-09-14	Seattle United NE Blue G00	0	Newport FC G00	2	NPSL G13D1	0.69	1.36
9198	2013-09-07	Seattle United NE Blue G00	0	Crossfire Select Habash G00	1	NPSL G13D1	0.50	1.27
8927	2013-08-18	Seattle United NE Blue G00	2	NSC Spirit G00	3	Bigfoot Silver U13	0.59	1.41
8853	2013-08-17	Seattle United NE Blue G00	1	NW United Lecca G00	0	Bigfoot Silver U13	3.55	0.29
8816	2013-08-16	Seattle United NE Blue G00	6	Monroe FC PA Elite G00	2	Bigfoot Silver U13	1.87	0.86
8807	2013-08-15	Seattle United NE Blue G00	0	SCORE Rockets G00	0	Bigfoot Silver U13	0.63	0.99
8647	2013-08-04	Kitsap Pumas G00	4	Seattle United NE Blue G00	0	Dungeness Cup GU13	1.80	0.28
8596	2013-08-03	Seattle United NE Blue G00	3	West Narrows FC Blue G00	1	Dungeness Cup GU13	3.74	0.65
8599	2013-08-03	Seattle United NE Blue G00	0	Kitsap Pumas G00	1	Dungeness Cup GU13	0.28	1.80
8562	2013-08-02	Seattle United NE Blue G00	1	NK Storm G00	0	Dungeness Cup GU13	0.38	1.67
8294	2013-07-13	Seattle United NE Blue G00	1	Bellevue Blaze G00	1	Seattle Cup GU13	0.79	0.52
8302	2013-07-13	Seattle United NE Blue G00	1	NK Storm G00	2	Seattle Cup GU13	0.38	1.67
8256	2013-07-12	NW United Moulton G00	0	Seattle United NE Blue G00	0	Seattle Cup GU13	3.67	0.37
7966	2013-06-15	Emerald City FC Green G00	1	Seattle United NE Blue G00	1	Shoreline Classic GU12-13 Gold	0.90	1.18
7969	2013-06-15	Seattle United Shoreline Blue G00	0	Seattle United NE Blue G00	0	Shoreline Classic GU12-13 Gold	1.59	0.45

	date	home		away		venue	pred.home	pred.away
7935	2013-06-14	Seattle United NE Blue G00	0	Seattle United Shoreline White G00	0	Shoreline Classic GU12-13 Gold	1.14	1.08